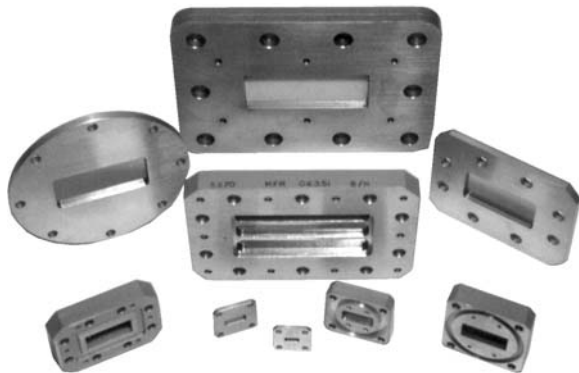




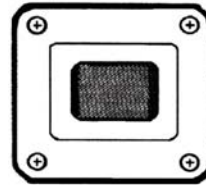
RECTANGULAR WAVEGUIDE PRESSURE WINDOWS 270 SERIES

**DATA
SHEET
No. T87A**

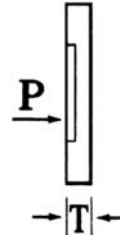
- LOW VSWR
- HIGHPOWER



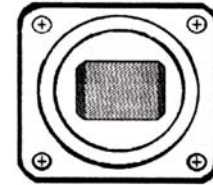
STYLE 1
UNIDIRECTIONAL



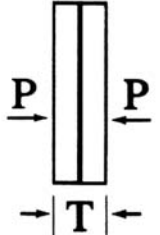
COVER/COVER



STYLE 2
OMNIDIRECTIONAL



COVER/GASKET
GASKET/GASKET
COVER/COVER



DESCRIPTION

MEC Rectangular Waveguide Pressure Windows offer low Reflection Loss over complete waveguide bands. Working pressure is 30 lbs. Typically they have a gasket groove on one side and conform to standard flange dimensions. Clearance holes are supplied for installation between flanges. Windows may be manufactured out of aluminum or brass.

SPECIFICATIONS

MODEL NO.	FLANGE TYPE	STYLE	T (INCHES)
S270	UG-F/G	2	1/2
	CPR-F	2	1/2
	CPR-G	2	1/2
	CMR	2	1/2
B270	CPR-F	1	1/4
	CPR-G	2	3/8
	CMR	2	3/8
G170	UG-F	1	3/16
	UG-G	2	3/8
	CPR-F	1	3/16
	CPR-G	2	3/8
	CMR	2	3/8
D270	UG-F	1	3/16
	UG-G	2	3/8
	CPR-F	1	3/16
	CPR-G	2	3/8
	CMR	2	3/8
J270	UG-F	1	3/16
	UG-G	2	3/8
	CPR-F	1	3/16
	CPR-G	2	3/8
	CMR	2	3/8

MODEL NO.	FLANGE TYPE	STYLE	T (INCHES)
H270	UG-F	1	3/16
	UG-G	2	3/8
	CPR-F	1	3/16
	CPR-G	2	3/8
	CMR	2	3/8
W270	UG-F	1	3/16
	UG-G	2	3/8
X270	UG-F	1	3/16
	UG-G	2	3/8
	CPR-F	1	3/16
	CPR-G	2	3/8
	CMR	2	3/8
M270	UG-F	1	3/16
	UG-G	2	3/8
	CPR-F	1	3/16
	CPR-G	2	3/8
P270	UG-F	1	3/16
	UG-G	2	5/16
N270	UG-F	1	3/16
	UG-G	2	5/16
K270	UG-F	1	1/8
	UG-G	2	1/4
Y270	UG-F	1	1/8
	UG-G	2	1/4
A270	UG-F	1	1/8
	UG-G	2	1/4

ORDERING INFORMATION

- (1) Ordering by model No., flange type, and style.
- (2) Call for information about higher power and special applications

